

Santa Cruz Gardens Town Hall

Nov. 9th, 2023



MANU KOENIG
1ST DISTRICT SUPERVISOR

Agenda



- General County Updates – Supervisor Koenig



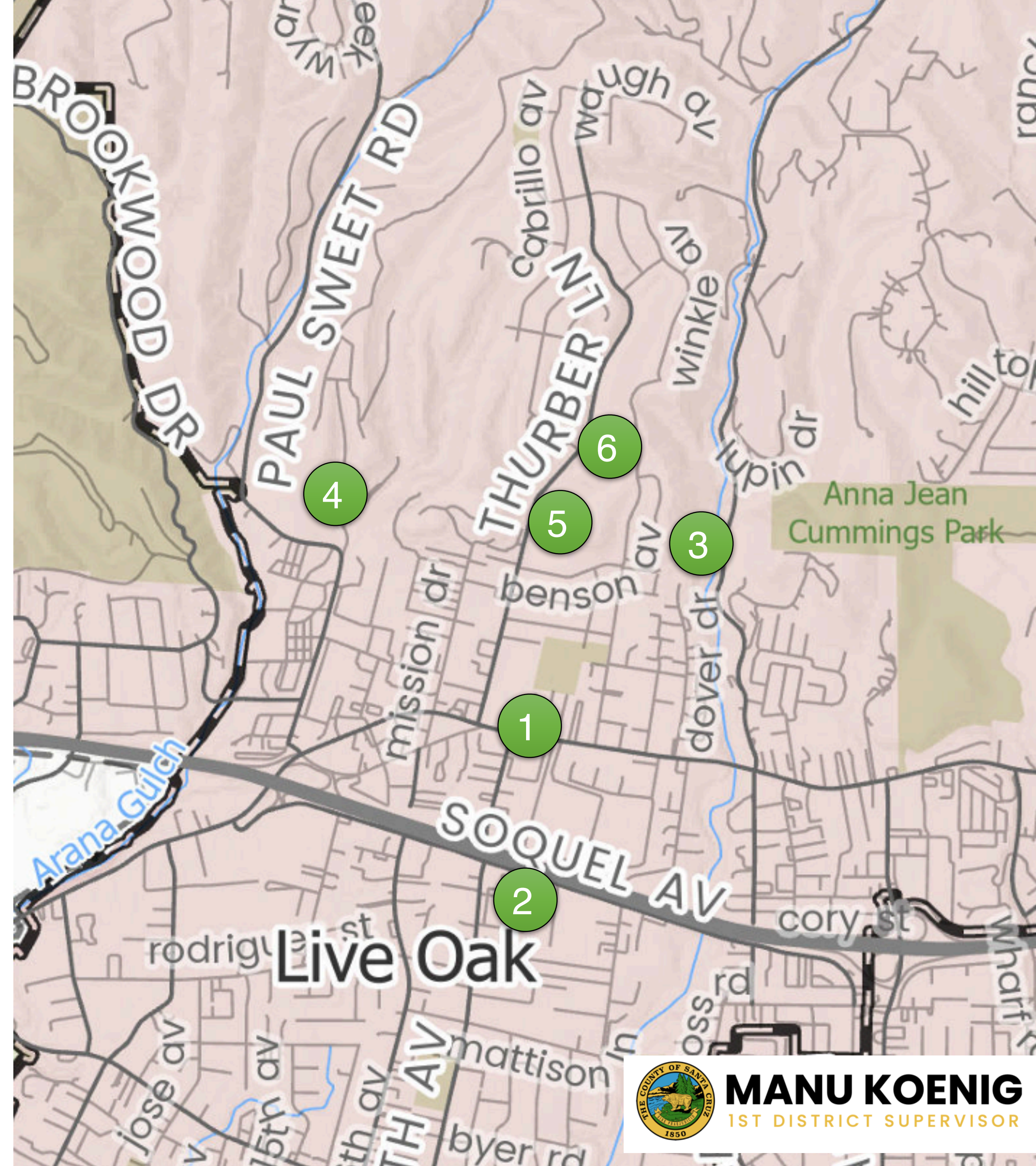
- Road Safety Overview – Sr. Civil Engineer, Russell Chen



- 2023–24 Winter Preparedness – Director of Response Recovery and Resilience, David Reid

General County Updates

1. Housing Element Public Hearing 11/14
2. Youth Crises Stabilization Center
3. Fire Risk: Mid County Trails
4. Chaminade Update
5. Tree and Weed Maintenance
6. Road Safety Overview



MANU KOENIG
1ST DISTRICT SUPERVISOR

Housing Element – Public Hearing Nov. 14th

What is it? A state required housing plan, including a site inventory.

- 5th Cycle progress 1,042 units built of 1,314 planned (79%)
- 6th Cycle RHNA Goal **4,634 units (350%)**
- 74% built by the private sector
- Why? In the last 10 years wages have increased 40%, the price of housing 117%



Housing Element - Public Hearing Nov. 14th



Housing Element – Public Hearing Nov. 14th

Appendix HE-E-Table 7: Sites to be Rezoned

Assessor Parcel Number	Address	Zip Code	Parcel Size (Acres)	Current General Plan Designation	Proposed General Plan (GP) Designation	Current Zoning	Proposed Zoning	Description of Existing Uses	Minimum Density Allowed	Maximum Density Allowed	Very Low Income	Low-Income	Moderate-Income	Above Moderate-Income	Total
025-013-37	3500 Paul Sweet Rd, Santa Cruz	95065	0.521	C-O	C-O	PA	PA-Min	Commercial	22	45	5	5	0	0	10
025-091-49	3134 Thurber Ln, Santa Cruz	95065	1.5	R-UM, O-U	R-UH	RM-4	RM-2	Residential	11	30	0	0	1	4	5
025-091-50	3158 Thurber Ln., Santa Cruz	95065	0.52	O-U; R-UM	O-U; R-UH	RM-4	RM-2	Residential	11	30	1	2	3	3	9
025-091-52	3161 - 3165 Prather Ln, Santa Cruz	95065	1.909	O-R	R-UH/O-R	PR	RM-2/PR	Residential	11	30	3	2	0	0	5
025-111-14	3105 Stanley Ave., Santa Cruz	95065	0.49	R-UL	R-UH	R-1-6	RM-2	Residential	11	30	1	2	3	3	9
025-111-15	3111 Stanley Ave., Santa Cruz	95065	0.48	R-UL	R-UH	R-1-6	RM-2	Residential	11	30	1	2	3	3	9
025-361-01	2300 Benson Ave., Santa Cruz	95065	0.45	R-UL	R-UH	R-1-6	RM-1.5	Residential	11	30	1	2	3	3	9
025-361-03	3570 Winkle Ave., Santa Cruz	95065	0.45	R-UL	R-UH	R-1-6	RM-1.5	Residential	11	30	1	2	3	3	9
026-042-15	2507 Paul Minnie Ave., Santa Cruz	95062	0.42	R-UM	R-UH	R-1-5	RM-1.5	Residential	11	30	1	2	3	3	9
026-063-13	1127 Rodriguez St., Santa Cruz	95062	0.49	R-UM	R-UH	R-1-5	RM-1.5	Vacant	11	30	1	2	3	4	10
026-111-40	1308 Rodriguez St., Santa Cruz	95062	0.6	R-UL	R-UH	R-1-6-D	RM-2.5-D	Residential	11	30	1	2	3	3	9
026-122-36	2091 17Th Ave, Santa Cruz	95062	1.612	R-UL	R-UH	R-1	RM-1.5	Vacant	22	45	45	20	0	0	65
026-201-40	1445 17Th Ave., Santa Cruz	95062	0.42	R-UL	R-UH	R-1-6	RM-1.5	Residential	11	30	1	2	3	3	9
026-261-13	855 7Th Ave, Santa Cruz	95062	1.83	C-C; O-U	C-C; O-U	C-2	C-2-Min	Vacant	22	45	35	30	0	0	65
026-261-16	901 7Th Ave, Santa Cruz	95062	6.06	C-C; O-U	C-C; O-U	C-2	C-2-Min	Vacant	22	45	25	5	0	0	30
026-311-33	1135 17Th Ave, Santa Cruz	95062	0.948	C-N	C-N	C-1	C-1-Min	Mixed use	22	45	15	15	0	0	30
026-461-31	860 Bostwick Ln., Santa Cruz	95062	0.52	R-UM	R-UH	R-1-6	RM-2	Residential	11	30	1	2	3	3	9
026-681-08	1810 7Th Ave., Santa Cruz	95062	0.43	R-UM	R-UH	R-1-5	RM-1.5	Residential	11	30	1	2	3	3	9
029-031-05	2650 Mattison Ln., Santa Cruz	95062	0.69	R-UM	R-UH	R-1-5	RM-3	Vacant	11	30	1	2	3	4	10
029-071-03	2021 Chanticleer Ave, Santa Cruz	95062	1	R-UL	R-UH	R1-6	RM-1.5	Residential	11	30	5	0	10	15	30
029-081-03	2044 Chanticleer Ave., Santa Cruz	95062	1	R-UL	R-UH	R-1-6	RM-4	Residential	11	30	1	2	3	3	9
029-081-04	2030 Chanticleer Ave., Santa Cruz	95062	0.66	R-UL	R-UH	R-1-6	RM-2.5	Residential	11	30	1	2	3	3	9
029-111-60	2305 Capitola Rd., Santa Cruz	95062	0.53	R-UM	R-UH	RM-4	RM-2	Residential	11	30	1	2	3	3	9
029-162-08	2025 Brommer St., Santa Cruz	95062	1.1	R-UL	R-UH	R-1-6	RM-4	Residential	11	30	0	0	3	4	7
029-162-09	(Ns) Andrew Ln. / Brommer St, Santa Cruz	95062	0.54	R-UL	R-UH	R-1-6	RM-2	Vacant	11	30	1	2	3	4	10
029-162-44	1215 Chanticleer Ave., Santa Cruz	95062	0.41	R-UL	R-UH	R-1-6	RM-1.5	Residential	11	30	0	0	3	3	6
029-181-43	1145 Chanticleer Ave. #5, Santa Cruz	95062	0.44	R-UM	R-UH	RM-4	RM-1.5	Residential	11	30	0	0	1	4	5
029-181-44	1145 Chanticleer Ave. #1, Santa Cruz	95062	0.62	R-UM	R-UH	R-1-6	RM-2	Residential	11	30	0	0	1	4	5



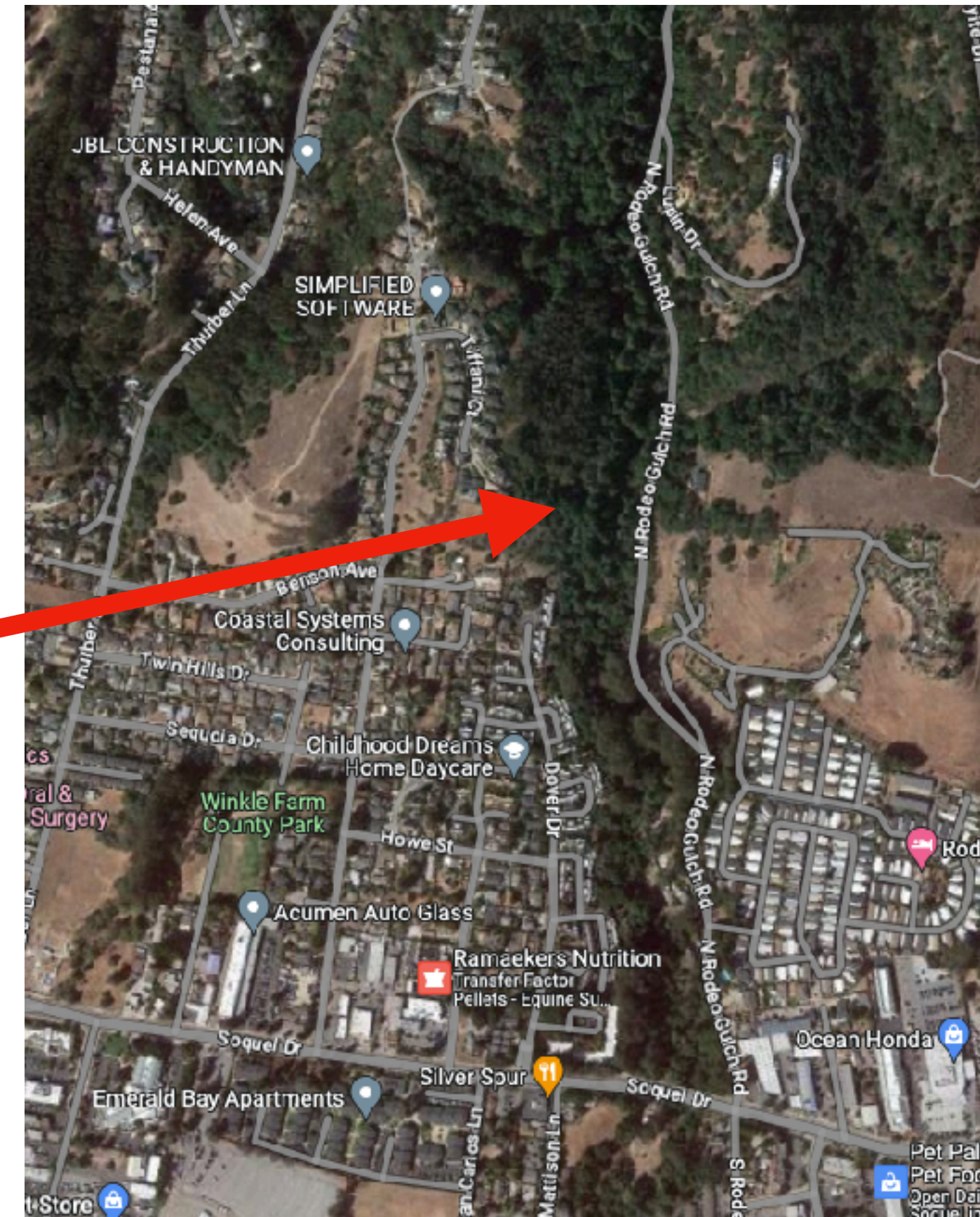
Youth Mental Health Crisis Center In Progress

- 5300 Soquel Ave
- Currently youth that need long term care are sent out of county
- Total project funds available \$24M
- 16 new residential care beds (0 currently)
- 8 short term stay beds (0-4 chairs currently)
- Will alleviate extreme pressure on Soquel Ave Crisis Stabilization Unit and Dominican Hospital ER
- Doors opening in approximately 1 year



Fire Risk in North Rodeo Gulch

Fire March 21st, 2021



A similar clean up effort on Carbonera Creek, behind the Emeline Campus cost over \$100,000.



MANU KOENIG
1ST DISTRICT SUPERVISOR

Mid-County Possible Trail Alignment

Proposed Trail

Segment Distance	Phase
0.74 mi	Phase One
0.56 mi	Phase Two
0.77 mi	Major Roads
1.30 mi	Assessors Parcels
0.14 mi	
1.35 mi	

0 0.05 0.1 0.2 Miles

N



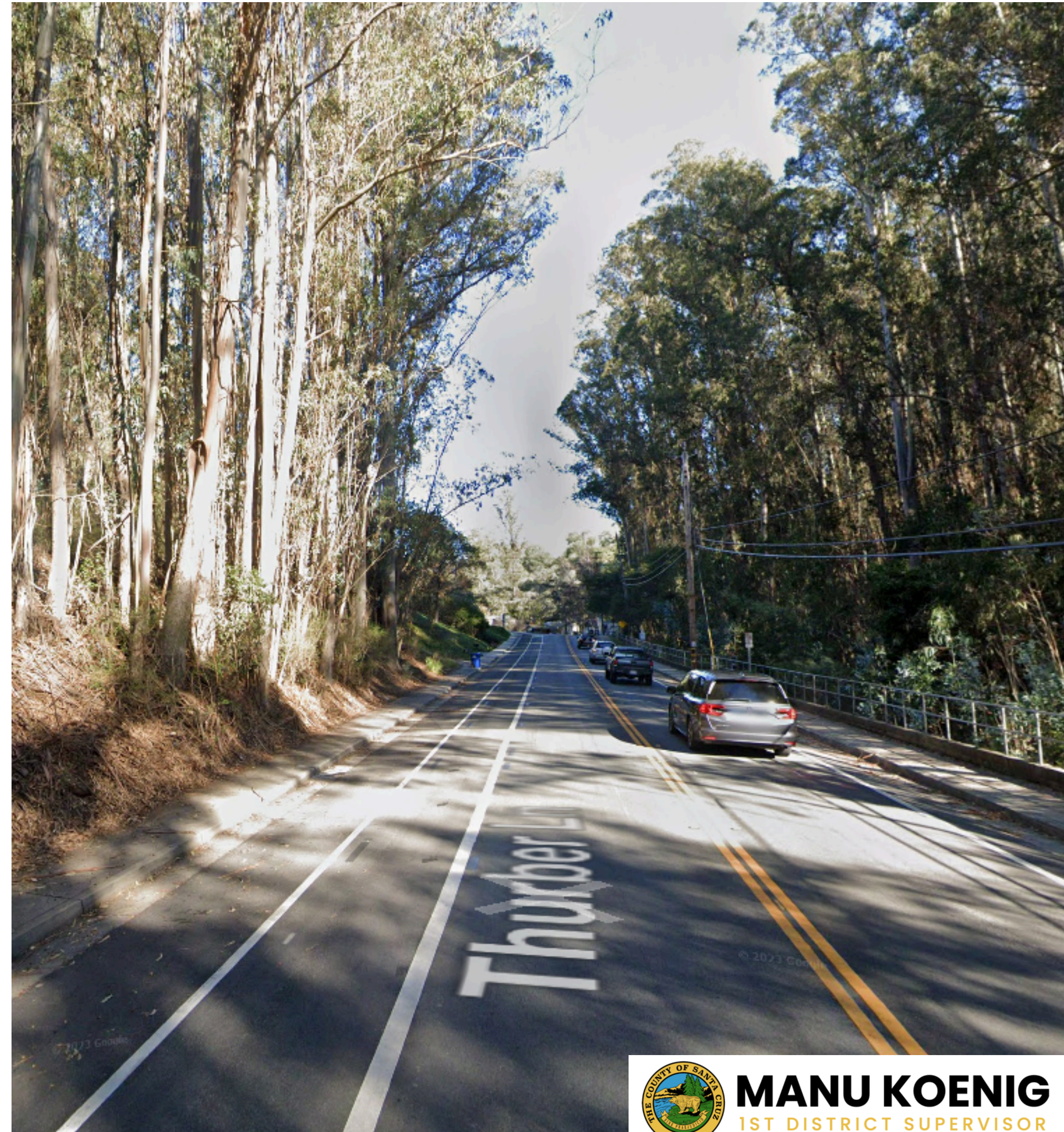
Chaminade Update



MANU KOENIG
1ST DISTRICT SUPERVISOR

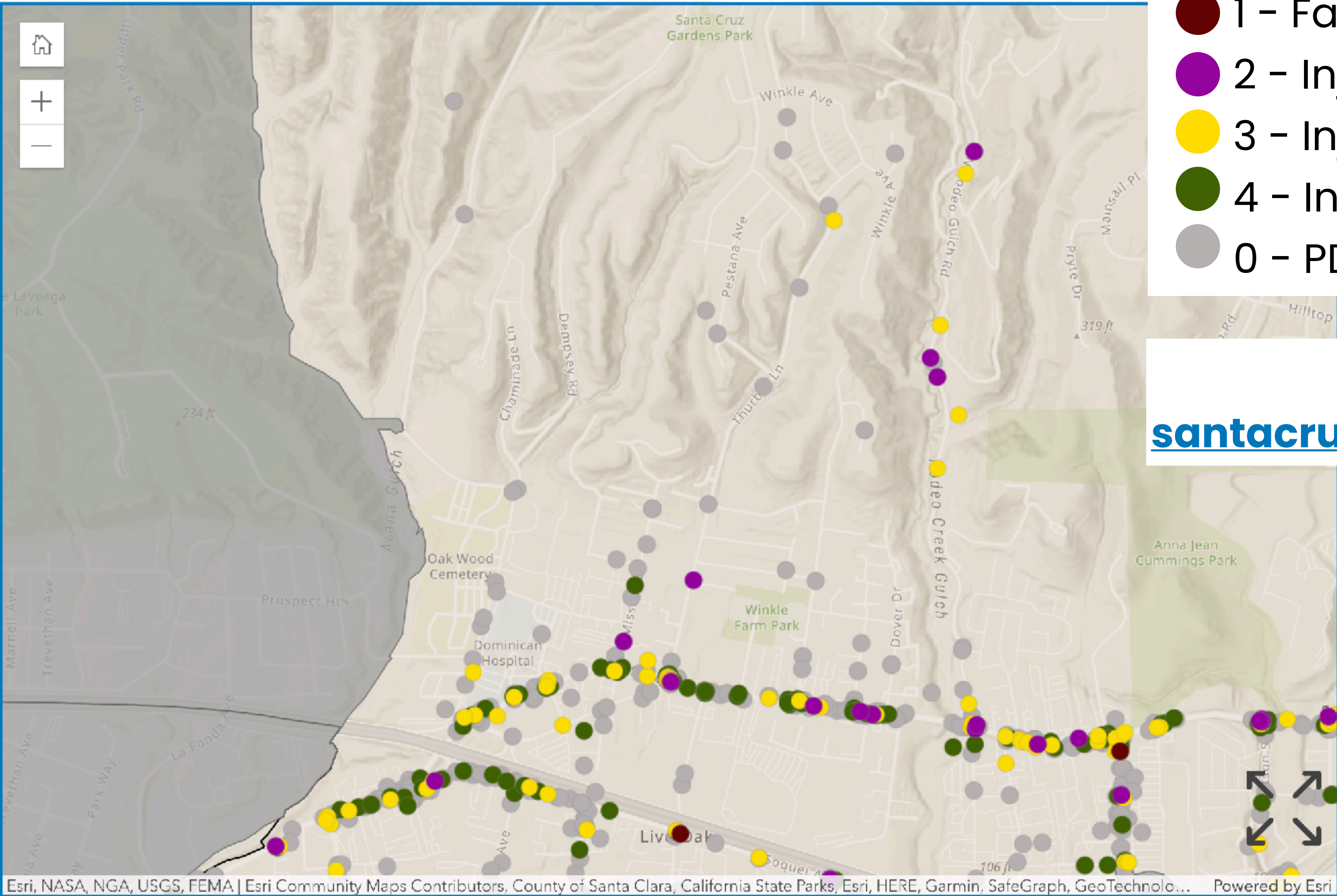
Tree and Weed Maintenance

- Proactive maintenance happening along Thurber over 3 years (2023, '24, '25)
- Central Fire Weed Abatement Ordinance - Wherever weeds are growing upon any property in the District, the Central Fire Board may declare a public nuisance and, unless abated, do the work and bill the property owner.



MANU KOENIG
1ST DISTRICT SUPERVISOR

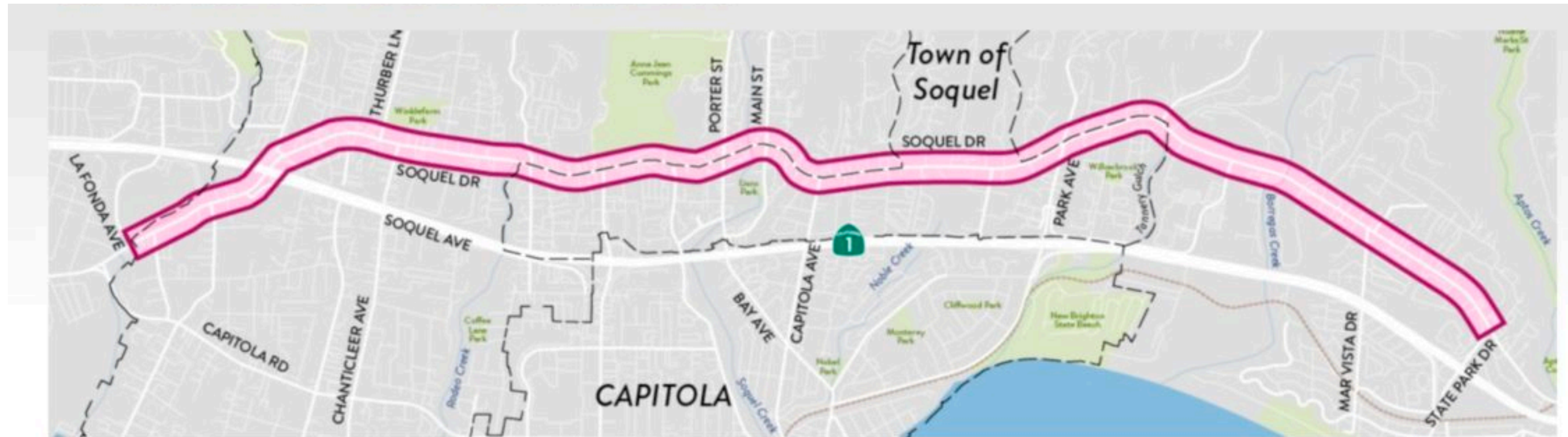
Safe Streets Survey



- 1 - Fatal
- 2 - Injury (Severe)
- 3 - Injury (Other Visible)
- 4 - Injury (Complaint of Pain)
- 0 - PDO

Take the Survey.
santacruzcountysafeststreets.com

Soquel Dr Congestion Buffered Bike Lane & Mitigation Project



- 22 smart lights
- 5 miles of buffered/protected bike lanes
- 10 mid-block crossings with rapid flashing beacons and 96 crosswalk upgrades
- *Expected ground breaking this summer*



HWY 1 Ground Breaking



MANU KOENIG
1ST DISTRICT SUPERVISOR

Recap of Neighborhood Surveys

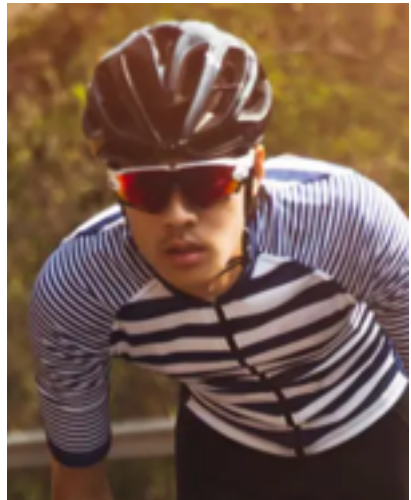
- 80 total responses
 - Should the speed limit on Thurber Ln be reduced from 30 mph to 25 mph? **Yes 54%**
 - Do you support installing road bumps/speed tables on Thurber Ln, recognizing that there will be a cost share? **No 70%**
 - Do you support installing road bumps/speed tables on Helen Ave, recognizing that there will be a cost share? **No 86%**



Questions/Contact Info



Manu.Koenig@santacruzcountyca.gov



Russell.Chen@santacruzcountyca.gov



David.Reid@santacruzcountyca.gov